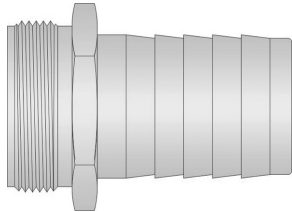


**Slangkoppeling met buitendraad**

Zware vlakdichtende buitendraadkoppeling, met lange slangtule.

Materiaal: messing of roestvrij staal.

Type: 1R



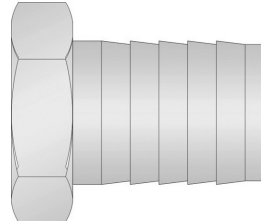
| Slangpilaar (mm) | Schroefdraad | Ref.     |
|------------------|--------------|----------|
| 13               | 1/2'         | 1R013    |
| 13               | 3/4'         | 1R013019 |
| 19               | 3/4'         | 1R019    |
| 19               | 1'           | 1R019025 |
| 25               | 1'           | 1R025    |
| 25               | 1 1/4'       | 1R025032 |
| 32               | 1 1/4'       | 1R032    |
| 32               | 1 1/2'       | 1R032038 |
| 38               | 1 1/2'       | 1R038    |
| 38               | 2'           | 1R038050 |
| 50               | 2'           | 1R050    |
| 50               | 2 1/2'       | 1R050065 |
| 63               | 2 1/2'       | 1R065    |
| 63               | 3'           | 1R065075 |
| 75               | 3'           | 1R075    |
| 80               | 3'           | 1R080    |
| 100              | 4'           | 1R100    |

**Slangkoppeling met binnendraad**

Zware vlakdichtende binnendraadkoppeling, met lange slangtule. Materiaal: messing, RVS of staal.

Dichting: Vulcolan (andere op aanvraag)

Type: 2R



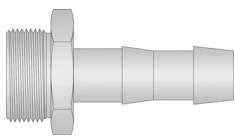
| Slangpilaar (mm) | Schroefdraad | Ref.     |
|------------------|--------------|----------|
| 13               | 1/2'         | 2R013    |
| 13               | 3/4'         | 2R013019 |
| 19               | 3/4'         | 2R019    |
| 19               | 1'           | 2R019025 |
| 25               | 1'           | 2R025    |
| 25               | 1 1/4'       | 2R025032 |
| 32               | 1 1/4'       | 2R032    |
| 32               | 1 1/2'       | 2R032038 |
| 38               | 1 1/2'       | 2R038    |
| 38               | 2'           | 2R038050 |
| 50               | 2'           | 2R050    |
| 50               | 2 1/2'       | 2R050065 |
| 63               | 2 1/2'       | 2R065    |
| 63               | 3'           | 2R065075 |
| 75               | 3'           | 2R075    |
| 80               | 3'           | 2R080    |
| 100              | 4'           | 2R100    |

**Slangkoppeling met buitendraad**

Buitendraad koppeling met BSP-draad en een conus van 37°.

Materiaal: messing.

Type: 1K



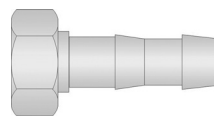
| Slangpilaar (mm) | Schroefdraad | Ref.   |
|------------------|--------------|--------|
| 4                | 1/8'         | 1K0404 |
| 4                | 1/4'         | 1K0406 |
| 4                | 3/8'         | 1K0410 |
| 6                | 1/8'         | 1K0604 |
| 6                | 1/4'         | 1K0606 |
| 6                | 3/8'         | 1K0610 |
| 6                | 1/2'         | 1K0613 |
| 8                | 1/8'         | 1K0804 |
| 8                | 1/4'         | 1K0806 |
| 9                | 1/8'         | 1K0904 |
| 9                | 1/4'         | 1K0906 |
| 9                | 3/8'         | 1K0910 |
| 9                | 1/2'         | 1K0913 |
| 9                | 3/4'         | 1K0919 |
| 11               | 1/8'         | 1K1104 |
| 11               | 1/4'         | 1K1106 |
| 11               | 3/8'         | 1K1110 |
| 11               | 1/2'         | 1K1113 |
| 11               | 3/4'         | 1K1119 |
| 13               | 1/4'         | 1K1306 |
| 13               | 3/8'         | 1K1310 |
| 13               | 1/2'         | 1K1313 |
| 13               | 3/4'         | 1K1319 |
| 16               | 3/8'         | 1K1610 |
| 16               | 3/4'         | 1K1619 |
| 19               | 5/8'         | 1K1916 |
| 19               | 3/4'         | 1K1919 |

**Slangkoppeling met binnendraad**

Binnendraad koppeling met BSP-draad en een conus van 37°.

Materiaal: messing.

Type: 2K

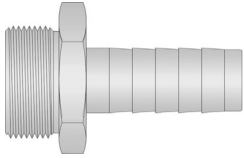


| Slangpilaar (mm) | Schroefdraad | Ref.   |
|------------------|--------------|--------|
| 4                | 1/8'         | 2K0404 |
| 4                | 1/4'         | 2K0406 |
| 4                | 3/8'         | 2K0410 |
| 6                | 1/8'         | 2K0604 |
| 6                | 1/4'         | 2K0606 |
| 6                | 3/8'         | 2K0610 |
| 6                | 1/2'         | 2K0613 |
| 9                | 1/4'         | 2K0906 |
| 9                | 3/8'         | 2K0910 |
| 9                | 1/2'         | 2K0913 |
| 11               | 1/4'         | 2K1106 |
| 11               | 3/8'         | 2K1110 |
| 11               | 1/2'         | 2K1113 |
| 13               | 1/2'         | 2K1313 |

**Slangkoppeling met buitendraad**

Vlakdichtende buitendraadkoppeling met BSP-draad. Materiaal: messing of roestvrij staal.

Type: 1VP

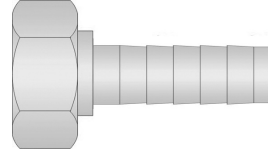


| Slangpilaar (mm) | Schroefdraad | Ref.      |
|------------------|--------------|-----------|
| 10               | 3/8'         | 1VP010    |
| 10               | 1/2'         | 1VP010013 |
| 13               | 1/2'         | 1VP013    |
| 13               | 3/4'         | 1VP013019 |
| 16               | 1/2'         | 1VP016013 |
| 16               | 3/4'         | 1VP016019 |
| 19               | 3/4'         | 1VP019    |
| 19               | 1'           | 1VP019025 |
| 25               | 1'           | 1VP025    |

**Slangkoppeling met binnendraad**

Vlakdichtende binnendraadkoppeling met BSP-draad. Materiaal: messing of roestvrij staal.

Type: 2VP

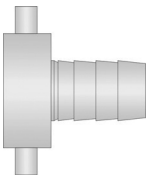


| Slangpilaar (mm) | Schroefdraad | Ref.      |
|------------------|--------------|-----------|
| 10               | 3/8'         | 2VP010    |
| 10               | 1/2'         | 2VP010013 |
| 13               | 1/2'         | 2VP013    |
| 13               | 3/4'         | 2VP013019 |
| 16               | 1/2'         | 2VP016013 |
| 19               | 3/4'         | 2VP019    |
| 19               | 1'           | 2VP019025 |
| 25               | 1'           | 2VP025    |

**Slangkoppeling met binnendraad/nokken**

Vlakdichtende slangkoppeling met nokken. Materiaal: messing.

Type: 2KN - 29KN

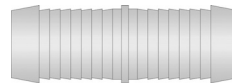


| Slangpilaar (mm) | Schroefdraad | Ref.     |
|------------------|--------------|----------|
| 10               | 1/2'         | 2KN1013  |
| 13               | 3/4'         | 2KN1319  |
| Idem 90°         |              |          |
| 10               | 3/4'         | 29KN1019 |
| 13               | 3/4'         | 29KN1319 |

**Slangredder**

Slangredder voor het verbinden van 2 slangen. Materiaal: messing, RVS of staal.

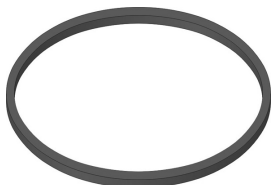
Type: 3K



| Slangpilaar (mm) | Ref. |
|------------------|------|
| 6                | 3K06 |
| 9                | 3K09 |
| 11               | 3K11 |
| 13               | 3K13 |
| 20               | 3K20 |
| 25               | 3K25 |
| 32               | 3K32 |
| 38               | 3K38 |
| 50               | 3K50 |

**Dichtingen voor slangkoppelingen**

Type: X2R



| DN  | Ref.    |
|-----|---------|
| 13  | X2R*013 |
| 19  | X2R*019 |
| 25  | X2R*025 |
| 32  | X2R*032 |
| 38  | X2R*038 |
| 50  | X2R*050 |
| 63  | X2R*063 |
| 75  | X2R*075 |
| 100 | X2R*100 |

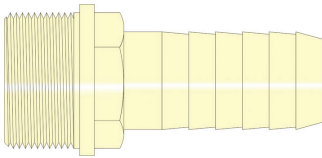
Vervang \* door:

- B = Buna
- BW = Buna wit
- P = PTFE
- V = Vulcolan
- VI = Viton

**Nylon slangkoppeling met buitendraad**

Vlakdichtende nylon buitendraadkoppeling.  
Goede chemische bestendigheid, licht in gewicht.

Type: 1PA

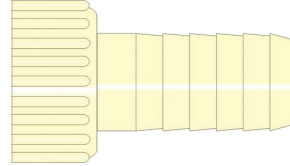


| Slang-pilaar (mm) | Schroef-draad | Ref.    |
|-------------------|---------------|---------|
| 6                 | 1/4'          | 1PA06   |
| 10                | 3/8'          | 1PA10   |
| 13                | 1/2'          | 1PA13   |
| 13                | 3/4'          | 1PA1319 |
| 16                | 1/2'          | 1PA1613 |
| 20                | 3/4'          | 1PA20   |
| 25                | 1'            | 1PA25   |
| 30                | 1 1/4'        | 1PA30   |
| 32                | 1 1/4'        | 1PA32   |
| 38                | 1 1/2'        | 1PA38   |
| 50                | 2'            | 1PA50   |

**Nylon slangkoppeling met binnendraad**

Vlakdichtende nylon binnendraadkoppeling.  
Goede chemische bestendigheid, licht in gewicht.

Type: 2PA

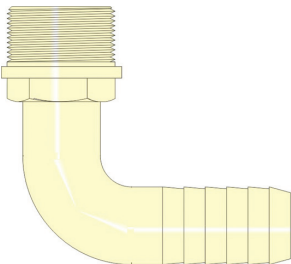


| Slang-pilaar (mm) | Schroef-draad | Ref.    |
|-------------------|---------------|---------|
| 6                 | 1/4'          | 2PA06   |
| 10                | 3/8'          | 2PA10   |
| 13                | 1/2'          | 2PA13   |
| 13                | 3/4'          | 2PA1319 |
| 16                | 1/2'          | 2PA1613 |
| 20                | 3/4'          | 2PA20   |
| 25                | 1'            | 2PA25   |
| 30                | 1 1/4'        | 2PA30   |
| 32                | 1 1/4'        | 2PA32   |
| 38                | 1 1/2'        | 2PA38   |
| 50                | 2'            | 2PA50   |

**Nylon slangkoppeling met buitendraad 90°**

Vlakdichtende nylon buitendraadkoppeling. Goede chemische bestendigheid, licht in gewicht. Uitvoering 90°.

Type: 19PA

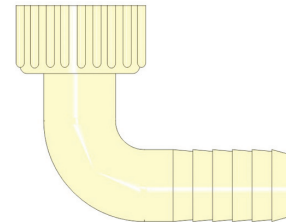


| Slang-pilaar (mm) | Schroef-draad | Ref.     |
|-------------------|---------------|----------|
| 6                 | 1/4'          | 19PA06   |
| 10                | 3/8'          | 19PA10   |
| 13                | 1/2'          | 19PA13   |
| 13                | 3/4'          | 19PA1319 |
| 16                | 1/2'          | 19PA1613 |
| 20                | 3/4'          | 19PA20   |
| 25                | 1'            | 19PA25   |
| 30                | 1 1/4'        | 19PA30   |
| 32                | 1 1/4'        | 19PA32   |
| 38                | 1 1/2'        | 19PA38   |
| 50                | 2'            | 19PA50   |

**Nylon slangkoppeling met binnendraad 90°**

Vlakdichtende nylon binnendraadkoppeling. Goede chemische bestendigheid, licht in gewicht. Uitvoering 90°.

Type: 29PA



| Slang-pilaar (mm) | Schroef-draad | Ref.     |
|-------------------|---------------|----------|
| 6                 | 1/4'          | 29PA06   |
| 10                | 3/8'          | 29PA10   |
| 13                | 1/2'          | 29PA13   |
| 13                | 3/4'          | 29PA1319 |
| 16                | 1/2'          | 29PA1613 |
| 20                | 3/4'          | 29PA20   |
| 25                | 1'            | 29PA25   |
| 30                | 1 1/4'        | 29PA30   |
| 32                | 1 1/4'        | 29PA32   |
| 38                | 1 1/2'        | 29PA38   |
| 50                | 2'            | 29PA50   |

**Slangkoppeling met buitendraad**

Zware vlakdichtende buitendraadkoppeling, met gladde slangtule voor montage klemschalen. (DIN2817)

Materiaal: messing of roestvrij staal

Type: RM

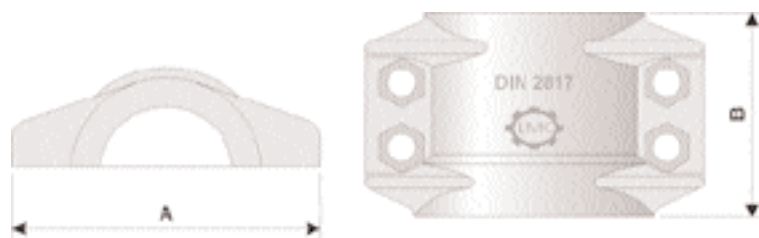


| DN | Schroefdr.   | Materiaal | Ref.        |
|----|--------------|-----------|-------------|
| 13 | 1/2' BSP     | Messing   | RM013       |
| 13 | 1/2' BSP     | RVS       | RRM013      |
| 13 | 1/2' NPT     | Messing   | RRM013N     |
| 13 | 1/2' NPT     | RVS       | RRM013N     |
| 13 | 1/2' BSP 60° | RVS       | RRM013BSP60 |
| 13 | 3/4' BSP     | Messing   | RM013019    |
| 19 | 1/2' BSP     | Messing   | RM019013    |
| 19 | 1/2' BSP     | RVS       | RRM019013   |
| 19 | 3/4' BSP     | Messing   | RM019       |
| 19 | 3/4' BSP     | RVS       | RRM019      |
| 19 | 3/4' NPT     | Messing   | RM019N      |
| 19 | 3/4' NPT     | RVS       | RRM019N     |
| 19 | 3/4' BSP 60° | RVS       | RRM019BSP60 |
| 19 | 1' BSP       | Messing   | RM019025    |
| 19 | 1' BSP       | RVS       | RRM019025   |
| 25 | 1/2' BSP     | RVS       | RRM025013   |
| 25 | 3/4' BSP     | Messing   | RM025019    |
| 25 | 3/4' BSP     | RVS       | RRM025019   |
| 25 | 3/4' NPT     | RVS       | RRM025019N  |
| 25 | 1' BSP       | Messing   | RM025       |
| 25 | 1' BSP       | RVS       | RRM025      |
| 25 | 1' NPT       | Messing   | RM025N      |
| 25 | 1' NPT       | RVS       | RRM025N     |
| 25 | 1' BSP 60°   | RVS       | RRM025BSP60 |
| 25 | 11/4' BSP    | Messing   | RM025032    |
| 25 | 11/4' BSP    | RVS       | RRM025032   |
| 25 | 11/2' BSP    | Messing   | RM025038    |
| 25 | 11/2' BSP    | RVS       | RRM025038   |
| 25 | 2' BSP       | RVS       | RRM025050   |
| 32 | 1' BSP       | Messing   | RM032025    |
| 32 | 1' BSP       | RVS       | RRM032025   |
| 32 | 11/4' BSP    | Messing   | RM032       |

| DN  | Schroefdr. | Materiaal | Ref.      |
|-----|------------|-----------|-----------|
| 32  | 11/4' BSP  | RVS       | RRM032    |
| 32  | 11/4' NPT  | Messing   | RM032N    |
| 32  | 11/4' NPT  | RVS       | RRM032N   |
| 32  | 11/2' BSP  | Messing   | RM032038  |
| 32  | 11/2' BSP  | RVS       | RRM032038 |
| 32  | 2' BSP     | Messing   | RM032050  |
| 32  | 2' BSP     | RVS       | RRM032050 |
| 38  | 11/2' BSP  | Messing   | RM038     |
| 38  | 11/2' BSP  | RVS       | RRM038    |
| 38  | 11/2' NPT  | RVS       | RRM038N   |
| 38  | 2' BSP     | Messing   | RM038050  |
| 38  | 2' BSP     | RVS       | RRM038050 |
| 50  | 2' BSP     | Messing   | RM050     |
| 50  | 2' BSP     | RVS       | RRM050    |
| 50  | 2' NPT     | Messing   | RM050N    |
| 50  | 2' NPT     | RVS       | RRM050N   |
| 50  | 21/2' BSP  | Messing   | RM050063  |
| 50  | 21/2' BSP  | RVS       | RRM050063 |
| 63  | 21/2' BSP  | Messing   | RM063     |
| 63  | 21/2' BSP  | RVS       | RRM063    |
| 63  | 21/2' NPT  | Messing   | RM063N    |
| 63  | 21/2' NPT  | RVS       | RRM063N   |
| 75  | 3' BSP     | Messing   | RM075     |
| 75  | 3' BSP     | RVS       | RRM075    |
| 75  | 3' NPT     | Messing   | RM075N    |
| 75  | 3' NPT     | RVS       | RRM075N   |
| 80  | 3' BSP     | Messing   | RM080     |
| 80  | 3' BSP     | RVS       | RRM080    |
| 100 | 4' BSP     | Messing   | RM100     |
| 100 | 4' BSP     | RVS       | RRM100    |
| 100 | 4' NPT     | Messing   | RM100N    |
| 100 | 4' NPT     | RVS       | RRM100N   |

**RK-Klemschalen volgens DIN2817**

Type: RK



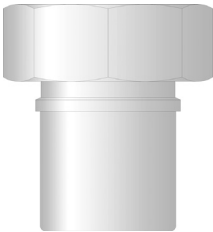
Volledige informatie betreft de RK-klemschaalkoppelingen kan u vinden in Deel 6 'Klemmen en klemschalen'. p.1

**Slangkoppeling met binnendraad**

Zware vlakdichtende binnendraadkoppeling, met gladde slangtule voor montage klemschalen. (DIN2817)

Materiaal: messing of roestvrij staal.

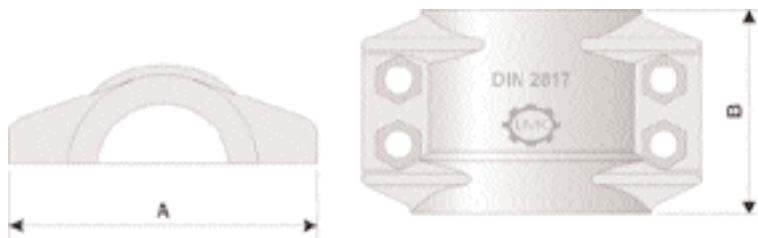
Type: RV



| DN | Schroefdr.   | Materiaal | Ref.        | DN  | Schroefdr. | Materiaal | Ref.      |
|----|--------------|-----------|-------------|-----|------------|-----------|-----------|
| 13 | 1/2' BSP     | Messing   | RV013       | 32  | 1 1/2' BSP | Messing   | RV032038  |
| 13 | 1/2' BSP     | RVS       | RRV013      | 32  | 1 1/2' BSP | RVS       | RRV032038 |
| 13 | 1/2' BSP 60° | RVS       | RRV013BSP60 | 32  | 2' BSP     | Messing   | RV032050  |
| 13 | M 22 X 1.5   | Messing   | RV013M      | 38  | 1 1/2' BSP | Messing   | RV038     |
| 13 | 3/4' BSP     | Messing   | RV013019    | 38  | 1 1/2' BSP | RVS       | RRV038    |
| 13 | 3/4' BSP     | RVS       | RRV013019   | 38  | M 52 X 1.5 | Messing   | RV038M    |
| 19 | 3/4' BSP     | Messing   | RV019       | 38  | 2' BSP     | Messing   | RV038050  |
| 19 | 3/4' BSP     | RVS       | RRV019      | 38  | 2' BSP     | RVS       | RRV038050 |
| 19 | 3/4' BSP 60° | RVS       | RRV019BSP60 | 40  | 1 1/2' BSP | Messing   | RV040     |
| 19 | M 30 x 1.5   | Messing   | RV019M      | 40  | 1 1/2' BSP | RVS       | RRV040    |
| 19 | 1' BSP       | Messing   | RV019025    | 40  | 2' BSP     | Messing   | RV040050  |
| 19 | 1' BSP       | RVS       | RRV019025   | 50  | 2' BSP     | Messing   | RV050     |
| 25 | 1' BSP       | Messing   | RV025       | 50  | 2' BSP     | RVS       | RRV050    |
| 25 | 1' BSP       | NPT       | RV025S      | 50  | M 65 X 2   | Messing   | RV050M    |
| 25 | 1' BSP 60°   | RVS       | RRV025BSP   | 50  | 2 1/2' BSP | Messing   | RV050063  |
| 25 | M 38 x 1.5   | Messing   | RV025M      | 63  | 2 1/2' BSP | Messing   | RV063     |
| 25 | 1 1/4' BSP   | Messing   | RV025032    | 63  | 2 1/2' BSP | RVS       | RRV063    |
| 25 | 1 1/4' BSP   | RVS       | RRV025032   | 63  | M 78 X 2   | Messing   | RV063M    |
| 25 | 1 1/2' BSP   | Messing   | RV025038    | 63  | 3' BSP     | Messing   | RV063075  |
| 25 | 1 1/2' BSP   | RVS       | RRV025038   | 75  | 3' BSP     | Messing   | RV075     |
| 32 | 1 1/4' BSP   | Messing   | RV032       | 75  | 3' BSP     | RVS       | RRV075    |
| 32 | 1 1/4' BSP   | RVS       | RRV032      | 75  | M 90 x 2   | Messing   | RV075M    |
| 32 | M 45 X 1.5   | Messing   | RV032M      | 80  | 3' BSP     | Messing   | RV080     |
|    |              |           |             | 80  | M 100 X 2  | Messing   | RV080M    |
|    |              |           |             | 100 | 4' BSP     | Messing   | RV100     |
|    |              |           |             | 100 | 4' BSP     | RVS       | RRV100    |

**RK-Klemschalen volgens DIN2817**

Type: RK



Volledige informatie betreft de RK-klemschaalkoppelingen kan u vinden in Deel 6 'Klemmen en klemschalen'. p.1