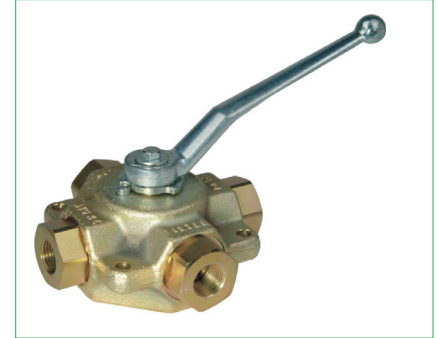
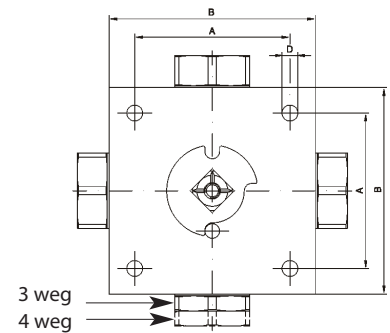
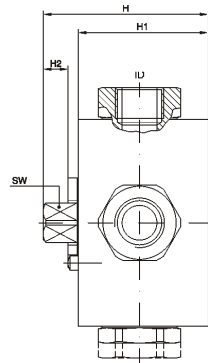


3-4 weg kogelkraan staal

- Uitvoering**
- Huis: staal of smeedstaal
 - Dichting spindel: perbunan (NBR)
 - Hendel: standaard gebogen hendel in verzinkt staal (aluminium op aanvraag)
 - Dichting kogel: pom (verschillende materialen voor kogeldichting en spindeldichting op aanvraag)



Temperatuur -30°C tot +70°C (lucht: +90°C)

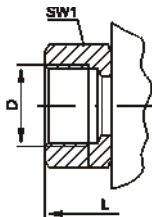


Schakelschema zie blz. 17-18

3-4 weg kogelkraan - BSP

Type: K3 / K4

BSP-F DIN/ISO 228

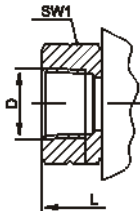


DN	D BSP	ID (L/T) mm	ID (X) mm	PN bar	L mm	A mm	B mm	C mm	H mm	H1 mm	SW mm	Referentie L-boring	Referentie T-boring
4	1/8"	5	5	500	100	55	70	6,5	68	52	12	K302F	K402F
6	1/4"	6	5	500	100	55	70	6,5	68	52	12	K304F	K404F
10	3/8"	9	7,5	500	115	65	80	6,5	70	55	14	K306F	K406F
13	1/2"	12,5	11,5	400	135	80	99	8,7	77	60	14	K308F	K408F
20	3/4"	19	18	400	148	85	112	8,7	90	70	17	K312F	K412F
25	1"	24	22	350	172	105	124	11,0	98	78	19	K316F	K416F
32	1.1/4"	24	22	350	180	105	124	11,0	98	78	19	K320F	K420F
40	1.1/2"	36	33	63	230	150	198	14,5	129	107	22	K324F	K424F

3-4 weg kogelkraan - NPT

Type: K3 N / K4 N

NPT-F ANSI B 2.1

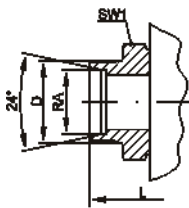


DN	D NPT	ID (L/T) mm	ID (X) mm	PN bar	L mm	A mm	B mm	C mm	H mm	H1 mm	SW mm	Referentie L-boring	Referentie T-boring
4	1/8"	5	5	500	105	55	70	6,5	68	52	12	K302FN	K402FN
6	1/4"	6	5	500	105	55	70	6,5	68	52	12	K304FN	K404FN
10	3/8"	9	7,5	500	115	65	80	6,5	70	55	14	K306FN	K406FN
13	1/2"	12,5	11,5	400	140	80	99	8,7	77	60	14	K308FN	K408FN
20	3/4"	19	18	400	154	85	112	8,7	90	70	17	K312FN	K412FN
25	1"	24	22	350	183	105	124	11,0	98	78	19	K316FN	K416FN
32	1.1/4"	24	22	350	190	105	124	11,0	98	78	19	F320FN	F320FN
40	1.1/2"	36	33	63	236	150	198	14,5	129	107	22	K324FN	K424FN

3-4 weg kogelkraan - metrisch - DIN 2353L

Type: K3 ML / K4 ML

Metrisch DIN 2353-L

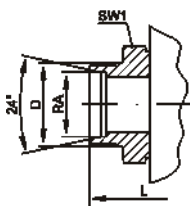


DN	D METR.	ID (L/T) mm	ID (X) mm	Ra (pijp) mm	PN bar	L mm	A mm	B mm	C mm	H mm	H1 mm	SW mm	Referentie L-boring	Referentie T-boring
4	M12X1,5	5	5	6	500	105	55	70	6,5	68	52	12	K312ML	K412ML
6	M14X1,5	6	5	8	500	105	55	70	6,5	68	52	12	K312ML	K412ML
8	M16X1,5	9	7,5	10	500	114	65	80	6,5	70	55	14	K316ML	K416ML
10	M18X1,5	9	7,5	12	500	114	65	80	6,5	70	55	14	K318ML	K418ML
13	M22X1,5	12,5	11,5	15	400	136	80	99	8,7	77	60	14	K322ML	K422ML
16	M26X1,5	12,5	11,5	18	400	136	80	99	8,7	77	60	14	K326ML	K426ML
20	M30X2	19	18	22	400	152	85	112	8,7	90	70	17	K330ML	K430ML
25	M36X2	24	22	28	350	174	105	124	11,0	98	78	19	K336ML	K436ML
32	M45X2	24	22	35	350	174	105	124	11,0	98	78	19	K345ML	K445ML
40	M52X2	36	33	42	63	246	150	198	14,5	129	107	22	K352ML	K452ML

3-4 weg kogelkraan - metrisch - DIN 2353S

Type: K3 MS / K4 MS

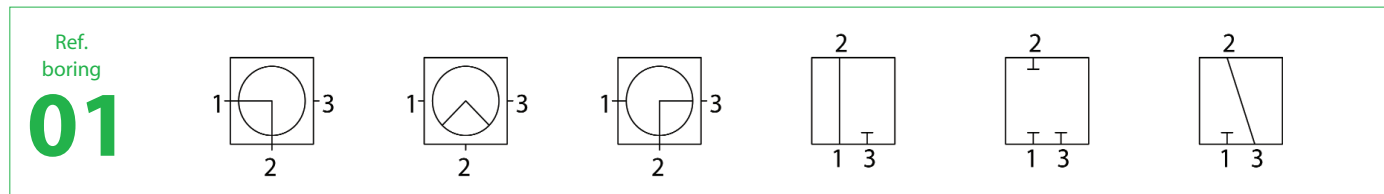
Metrisch DIN 2353-S



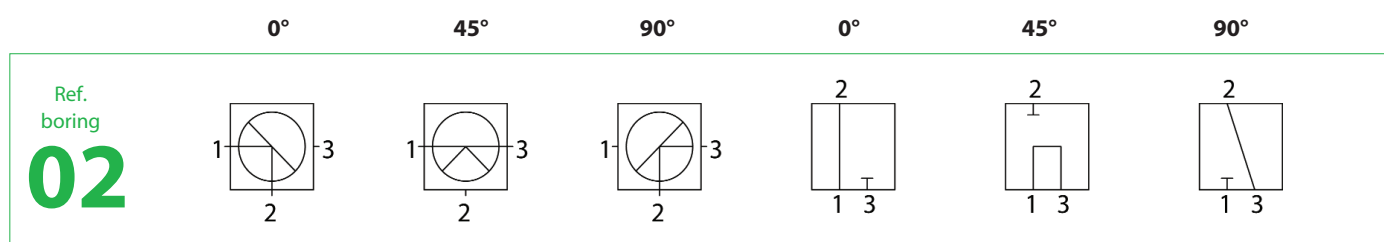
DN	D mm	ID (L/T) mm	ID (X) bar	Ra (pijp) mm	PN mm	L mm	A mm	B mm	C mm	H mm	H1 mm	SW mm	Referentie L-boring	Referentie T-boring
4	M16X1,5	5	5	8	500	105	55	70	6,5	68	52	12	K316MS	K416MS
6	M18X1,5	6	5	10	500	105	55	70	6,5	68	52	12	K318MS	K418MS
8	M20X1,5	9	7,5	12	500	116	65	80	6,5	71	55	12	K320MS	K420MS
10	M22X1,5	9	7,5	14	500	121	65	80	6,5	71	55	14	K322MS	K422MS
13	M24X1,5	12,5	11,5	16	400	140	80	99	8,7	77	60	14	K324MS	K424MS
16	M30X2	12,5	11,5	20	400	144	80	99	8,7	77	60	14	K330MS	K430MS
20	M36X2	19	18	25	400	162	85	112	8,7	89,5	71	14	K336MS	K436MS
25	M42X2	24	22	30	350	180	105	124	11,0	98	79	19	K342MS	K442MS
32	M52X2	24	22	38	350	184	150	198	14,5	129	107	19	K352MS	K452MS

Schakelschema K3

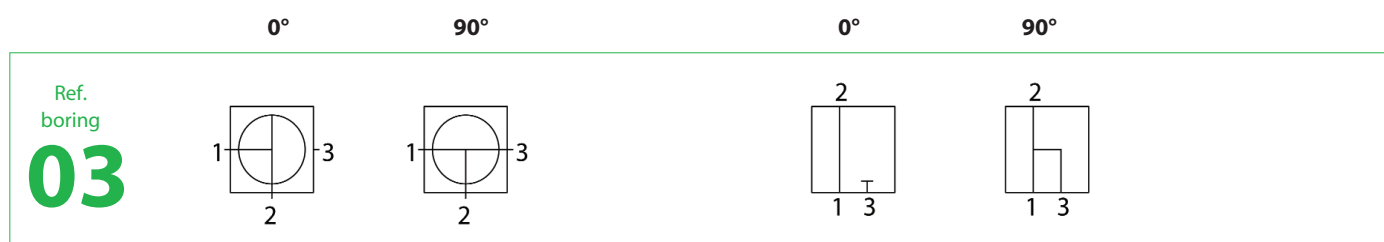
Plaats de referentie van de boring achter de referentie van de kraan



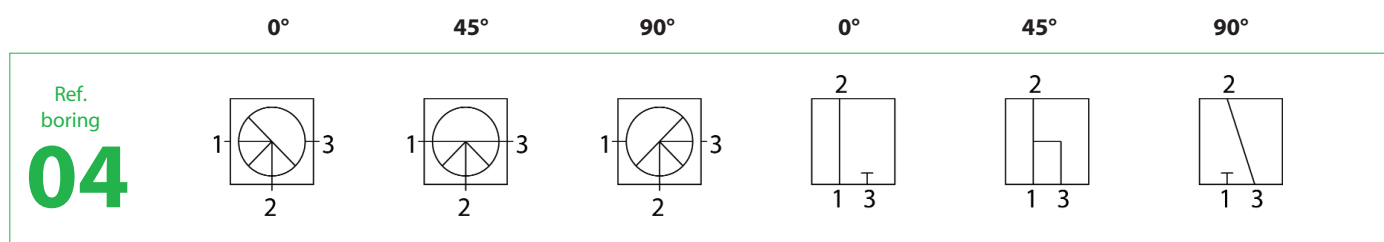
2/3 weg
L-boring



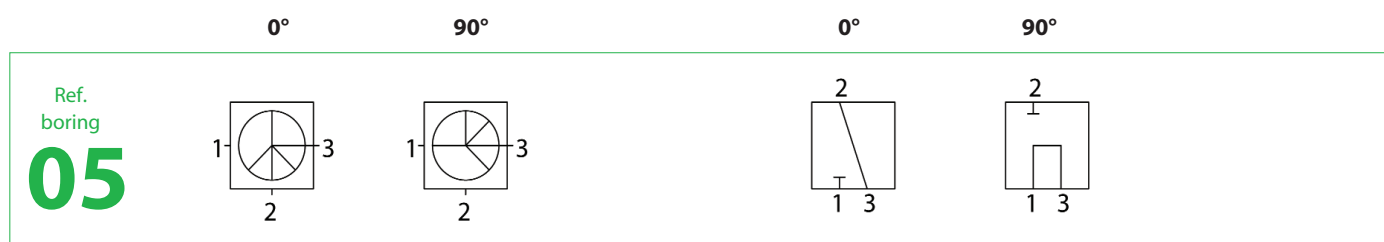
3/3 weg
L-boring met aanvullende boring



3/2 weg
T-boring



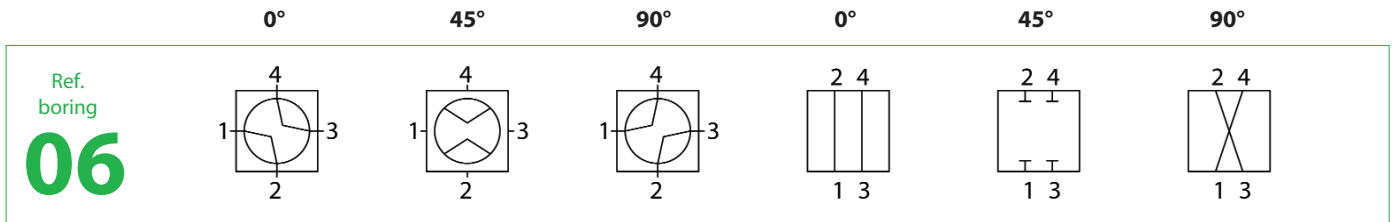
3/3 weg
T-boring met aanvullende boring



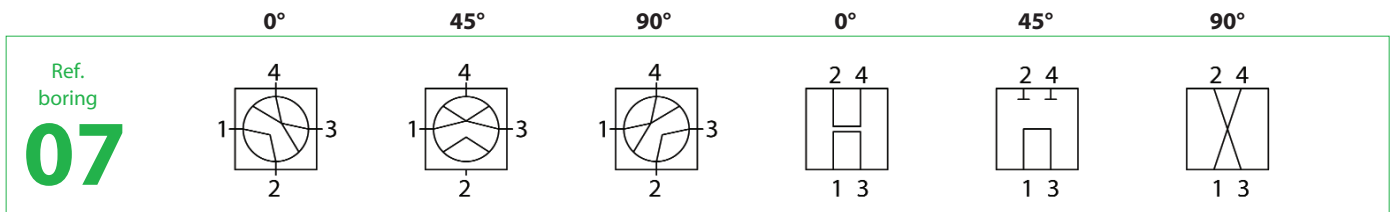
3/2 weg
T-boring met ontlufter

Schakelschema K4

Plaats de referentie van de boring achter de referentie van de kraan



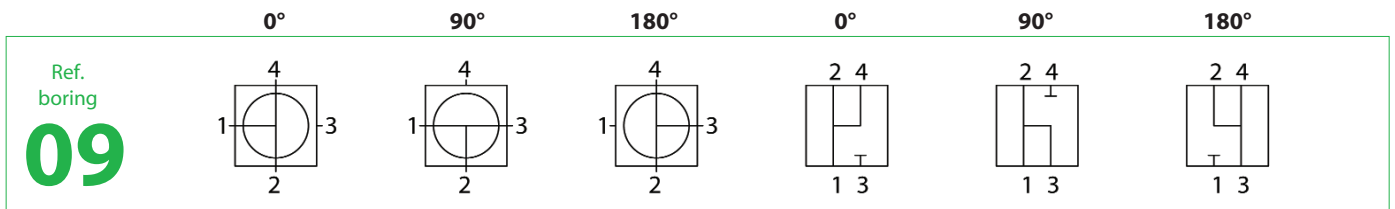
4/2 weg
X-boring



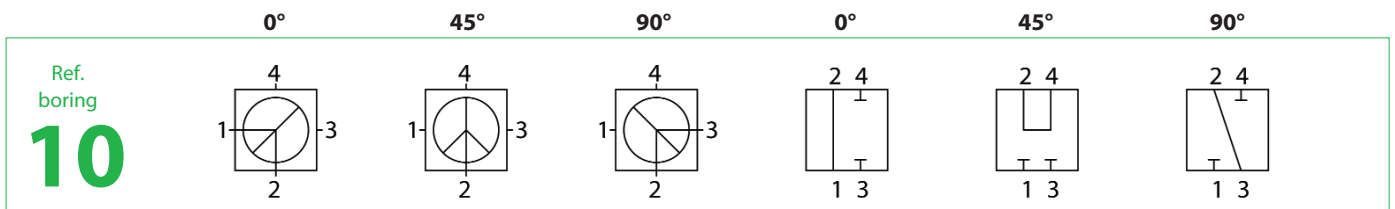
4/3 weg
X-boring met aanvullende boring



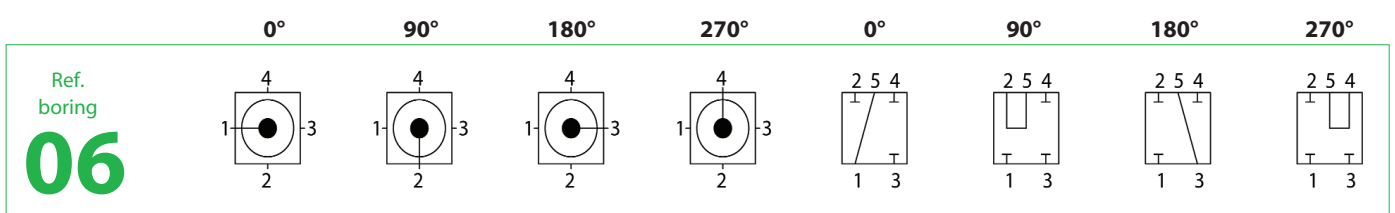
4/2 weg
T-boring



4/3 weg
T-boring



4/3 weg
L-boring met aanvullende boring



5/4 weg
Loodrechte L-boring