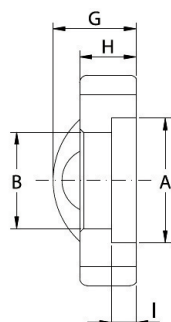
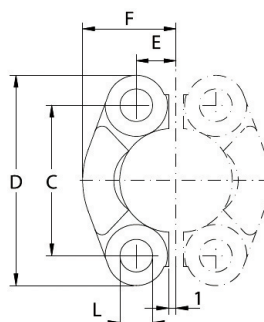


## Halve flens

## Type: KFLH



KFLH



KFLH

## Serie 3000

Diam.	PN bar	A mm	B mm	C mm	D mm	E mm	F mm	G mm	H mm	I mm	L mm	Metrisch bouten	Ref. halve flens
1/2"	345	30,96	24,26	38,10	54	8,74	22,8	19	13	6,22	8,7	M8x30	KFLH308
3/4"	345	38,89	32,13	47,63	65	11,13	25,9	22	14	6,22	10,7	M10x35	KFLH312
1"	345	45,24	38,48	52,37	70	13,08	29,2	24	16	7,49	10,7	M10x35	KFLH316
1.1/4"	280	51,59	43,69	58,72	79	15,09	36,3	22	14	7,49	12,0	M12x45	KFLH320
1.1/2"	210	61,09	50,80	69,85	94	17,86	41,1	25	16	7,49	13,5	M12x45	KFLH324
2"	210	72,24	62,74	77,77	102	21,44	48,2	26	16	9,02	13,5	M12x45	KFLH332
2.1/2"	175	84,94	74,93	88,90	114	25,40	54,1	38	19	9,02	13,5	M12x45	KFLH340
3"	140	102,39	90,93	106,38	135	30,96	65,3	41	22	9,02	16,7	M16x50	KFLH348
3.1/2"	35	115,10	102,36	120,65	152	34,92	69,5	28	22	10,72	17,0	M16x50	KFLH356
4"	35	127,79	115,06	130,18	162	38,88	76,0	35	25	10,72	17,0	M16x50	KFLH364
5"	35	153,19	140,46	152,40	184	46,04	90,0	41	28	10,72	17,0	M16x50	KFLH380

Referentie rvs uitvoering: R + Ref.

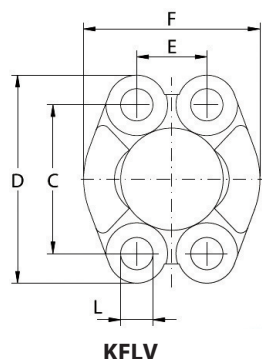
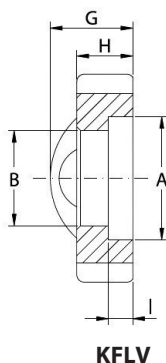
## Serie 6000

Diam.	PN bar	A mm	B mm	C mm	D mm	E mm	F mm	G mm	H mm	I mm	L mm	Metrisch bouten	Ref. halve flens
1/2"	420	32,54	26,64	40,49	56	9,12	23,6	22	16	7,24	8,7	M8x30	KFLH608
3/4"	420	42,06	32,51	50,80	71	11,91	30,0	28	19	8,26	11,0	M10x35	KFLH612
1"	420	48,41	38,86	57,15	81	13,89	34,8	33	24	9,02	13,0	M12x45	KFLH616
1.1/4"	420	54,76	44,45	66,68	95	15,88	38,6	38	27	9,78	15,0	M14x45	KFLH620
1.1/2"	420	64,29	51,56	79,38	113	18,26	47,5	43	30	12,07	17,0	M16x50	KFLH624
2"	420	80,16	67,56	96,82	133	22,23	56,9	52	37	12,07	21,0	M20x70	KFLH632

Referentie rvs uitvoering: R + Ref.

## Flens

## Type: KFLV



## Serie 3000

Diam.	PN bar	A mm	B mm	C mm	D mm	E mm	F mm	G mm	H mm	I mm	L mm	Metrisch bouten	Ref. halve flens
1/2"	345	30,96	24,26	38,10	54	17,48	45,6	19	13	6,22	8,7	M8x30	KFLV308
3/4"	345	38,89	32,13	47,63	65	22,23	51,8	22	14	6,22	10,7	M10x35	KFLV312
1"	345	45,24	38,48	52,37	70	26,19	58,4	24	16	7,49	10,7	M10x35	KFLV316
1.1/4"	280	51,59	43,69	58,72	79	30,18	72,6	22	14	7,49	12,0	M12x45	KFLV320
1.1/2"	210	61,09	50,80	69,85	94	35,71	82,2	25	16	7,49	13,5	M12x45	KFLV324
2"	210	72,24	62,74	77,77	102	42,88	96,4	26	16	9,02	13,5	M12x45	KFLV332
2.1/2"	175	84,94	74,93	88,90	114	50,80	108,2	38	19	9,02	13,5	M12x45	KFLV340
3"	140	102,39	90,93	106,38	135	61,93	130,6	41	22	9,02	16,7	M16x50	KFLV348
3.1/2"	35	115,10	102,36	120,65	152	69,85	139,0	28	22	10,72	17,0	M16x50	KFLV356
4"	35	127,79	115,06	130,18	162	77,77	152,0	35	25	10,72	17,0	M16x50	KFLV364
5"	35	153,19	140,46	152,40	184	92,08	180,0	41	28	10,72	17,0	M16x50	KFLV380

Referentie rvs uitvoering: R + Ref.

## Serie 6000

Diam.	PN bar	A mm	B mm	C mm	D mm	E mm	F mm	G mm	H mm	I mm	L mm	Metrisch bouten	Ref. halve flens
1/2"	420	32,54	26,64	40,49	56	18,24	47,2	22	16	7,24	8,7	M8x30	KFLV608
3/4"	420	42,06	32,51	50,80	71	23,80	60,0	28	19	8,26	11,0	M10x35	KFLV612
1"	420	48,41	38,86	57,15	81	27,76	69,6	33	24	9,02	13,0	M12x45	KFLV616
1.1/4"	420	54,76	44,45	66,68	95	31,75	77,2	38	27	9,78	15,0	M14x45	KFLV620
1.1/2"	420	64,29	51,56	79,38	113	36,50	95,0	43	30	12,07	17,0	M16x50	KFLV624
2"	420	80,16	67,56	96,82	133	44,45	113,8	52	37	12,07	21,0	M20x70	KFLV632

Referentie rvs uitvoering: R + Ref.