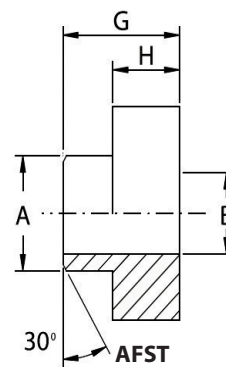
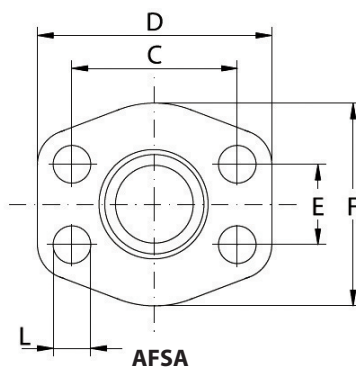
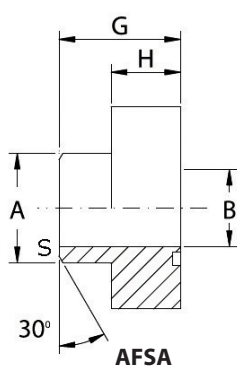


Aanlasflens butt-weld / schedule 80

Type: AFSA / AFST



Serie 3000

| Diam. | PN bar | A mm | B mm | S mm | C mm | D mm | E mm | F mm | G mm | H mm | L mm | Metrisch bouten | Ref. flens met o-ringgroef | Ref. tegenflens zonder o-ringgroef |
|--------|-----------|---------|---------|---------|---------|---------|---------|---------|---------|---------|---------|--------------------|-------------------------------|---------------------------------------|
| 1/2" | 345 | 21,5 | 13 | 4,25 | 38,10 | 57 | 17,48 | 46 | 36 | 16 | 9 | M8x30 | AFSA3080215042 | AFST3080215042 |
| 1/2" | 345 | 17,5 | 13 | 2,25 | 38,10 | 57 | 17,48 | 46 | 36 | 16 | 9 | M8x30 | AFSA3080175023 | AFST3080175023 |
| 3/4" | 345 | 28,0 | 19 | 4,50 | 47,63 | 65 | 22,23 | 50 | 36 | 18 | 11 | M10x35 | AFSA3120280045 | AFST3120280045 |
| 1" | 345 | 34,0 | 25 | 4,50 | 52,37 | 70 | 26,19 | 55 | 38 | 18 | 11 | M10x35 | AFSA3160340045 | AFST3160340045 |
| 1.1/4" | 280 | 42,8 | 32 | 5,40 | 58,72 | 79 | 30,18 | 68 | 41 | 21 | 11,5 | M10x40 | AFSA3200428054 | AFST3200428054 |
| 1.1/2" | 210 | 48,6 | 38 | 5,30 | 69,85 | 93 | 35,71 | 78 | 44 | 25 | 13,5 | M12x45 | AFSA3244860053 | AFST3244860053 |
| 2" | 210 | 61,0 | 51 | 5,00 | 77,77 | 102 | 42,88 | 90 | 45 | 25 | 13,5 | M12x45 | AFSA3320610050 | AFST3320610050 |
| 2.1/2" | 175 | 77,0 | 63 | 7,00 | 88,90 | 114 | 50,80 | 105 | 50 | 25 | 13,5 | M12x45 | AFSA3400770070 | AFST3400770070 |
| 3" | 140 | 92,0 | 73 | 9,50 | 106,38 | 134 | 61,93 | 124 | 50 | 27 | 17,5 | M16x50 | AFSA3480920095 | AFST3480920095 |
| 3.1/2" | 35 | 103,0 | 89 | 7,00 | 120,65 | 152 | 69,85 | 136 | 48 | 27 | 17,5 | M16x50 | AFSA3561030070 | AFST3561030070 |
| 4" | 35 | 115,5 | 99 | 8,25 | 130,18 | 162 | 77,77 | 146 | 48 | 27 | 17,5 | M16x50 | AFSA3641155082 | AFST3641155082 |
| 5" | 35 | 142,0 | 120 | 11,00 | 152,40 | 184 | 92,08 | 180 | 50 | 28 | 17,5 | M16x50 | AFSA3801420105 | AFST3801420105 |

Referentie rvs uitvoering: R + Ref.

Serie 6000

| Diam. | PN bar | A mm | B mm | S mm | C mm | D mm | E mm | F mm | G mm | H mm | L mm | Metrisch bouten | Ref. flens met o-ringgroef | Ref. tegenflens zonder o-ringgroef |
|--------|-----------|---------|---------|---------|---------|---------|---------|---------|---------|---------|---------|--------------------|-------------------------------|---------------------------------------|
| 1/2" | 420 | 21,5 | 13 | 4,25 | 40,49 | 57 | 18,24 | 46 | 36 | 16 | 9 | M8x30 | AFSA6080215042 | AFSA6080215042 |
| 1/2" | 420 | 17,5 | 13 | 2,25 | 40,49 | 57 | 18,24 | 46 | 36 | 16 | 9 | M8x30 | AFSA6080175023 | AFSA6080175023 |
| 3/4" | 420 | 28,0 | 19 | 4,50 | 50,80 | 71 | 23,80 | 55 | 35 | 21 | 11 | M10x40 | AFSA6120280045 | AFSA6120280045 |
| 1" | 420 | 34,0 | 25 | 4,50 | 57,15 | 79 | 27,76 | 68 | 41 | 21 | 13 | M12x45 | AFSA6160340045 | AFSA6160340045 |
| 1.1/4" | 380 | 42,8 | 32 | 5,40 | 66,68 | 93 | 31,75 | 78 | 44 | 25 | 15 | M14x45 | AFSA6200428054 | AFSA6200428054 |
| 1.1/2" | 320 | 48,6 | 38 | 5,30 | 79,38 | 112 | 36,50 | 94 | 55 | 30 | 17 | M16x50 | AFSA6240486053 | AFSA6240486053 |
| 2" | 250 | 61,0 | 51 | 5,00 | 96,82 | 134 | 44,45 | 114 | 65 | 37 | 21 | M20x70 | AFSA6320610050 | AFSA6320610050 |
| 2.1/2" | 230 | 76,6 | 63 | 6,80 | 123,80 | 180 | 58,70 | 152 | 80 | 45 | 26 | M24x80 | AFSA6400760068 | AFSA6400760068 |
| 3" | 200 | 90,0 | 73 | 8,50 | 152,40 | 208 | 71,40 | 178 | 90 | 55 | 33 | M30x100 | AFSA6480900085 | AFSA6480900085 |

Referentie rvs uitvoering: R + Ref.

Standaard zijn de tegenflenzen voorzien van getapte metrische gaten. Op aanvraag kunnen deze ook voorzien worden van UNF getapte gaten.